

Doing What Matters
for Jobs & the Economy
“A Regional Model”



**San Diego-Imperial County
Community Colleges
Regional Consortium
For
Workforce Development**

EDPAC/WEDPAC



Wednesday, January 22, 2014

Presenters

Dr. Sunita Cooke, President, Grossmont College

Mary Wylie, Regional Consortium Chair



**Doing What Matters
for Jobs & the Economy**

PRESENTATION COVERS:

- **San Diego/Imperial Regional Approach**
- **Sector Resources**
- **The Leadership Team**
- **Communication and Coordination**
- **Lessons Learned**
- **Questions?**

San Diego-Imperial Counties Regional Structure begins with:



**SDICCCA
SAN DIEGO/IMPERIAL COUNTY
COMMUNITY COLLEGE ASSOCIATION**

**501C3 NONPROFIT
MEETS MONTHLY
POLICY HEAD OF THE REGIONAL
CONSORTIUM
OFFICERS AND DELEGATES**



SDICCCA Colleges

MiraCosta

San Diego Miramar

Palomar

Southwestern

Mesa

San Diego Continuing Ed

San Diego City

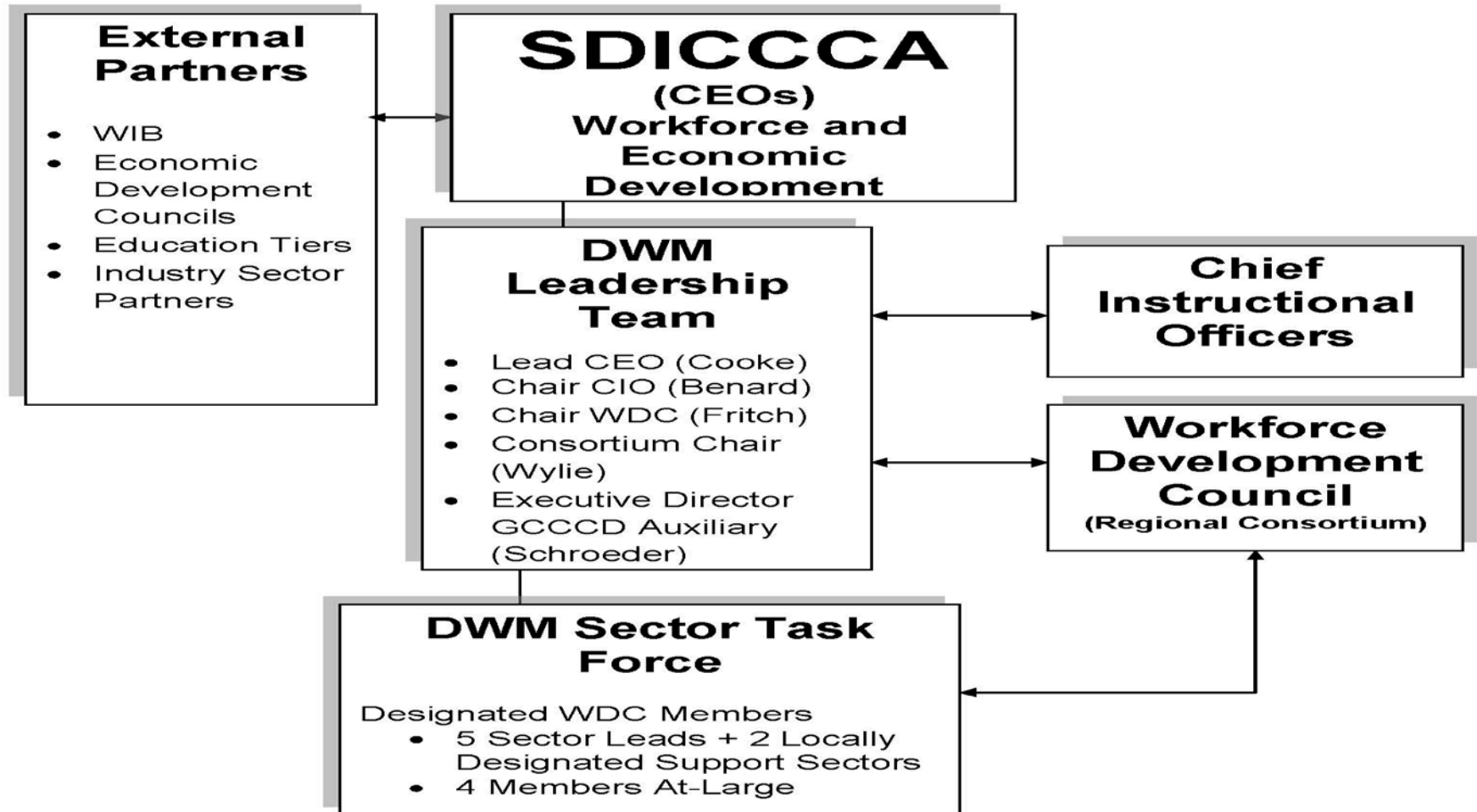
Cuyamaca

Grossmont

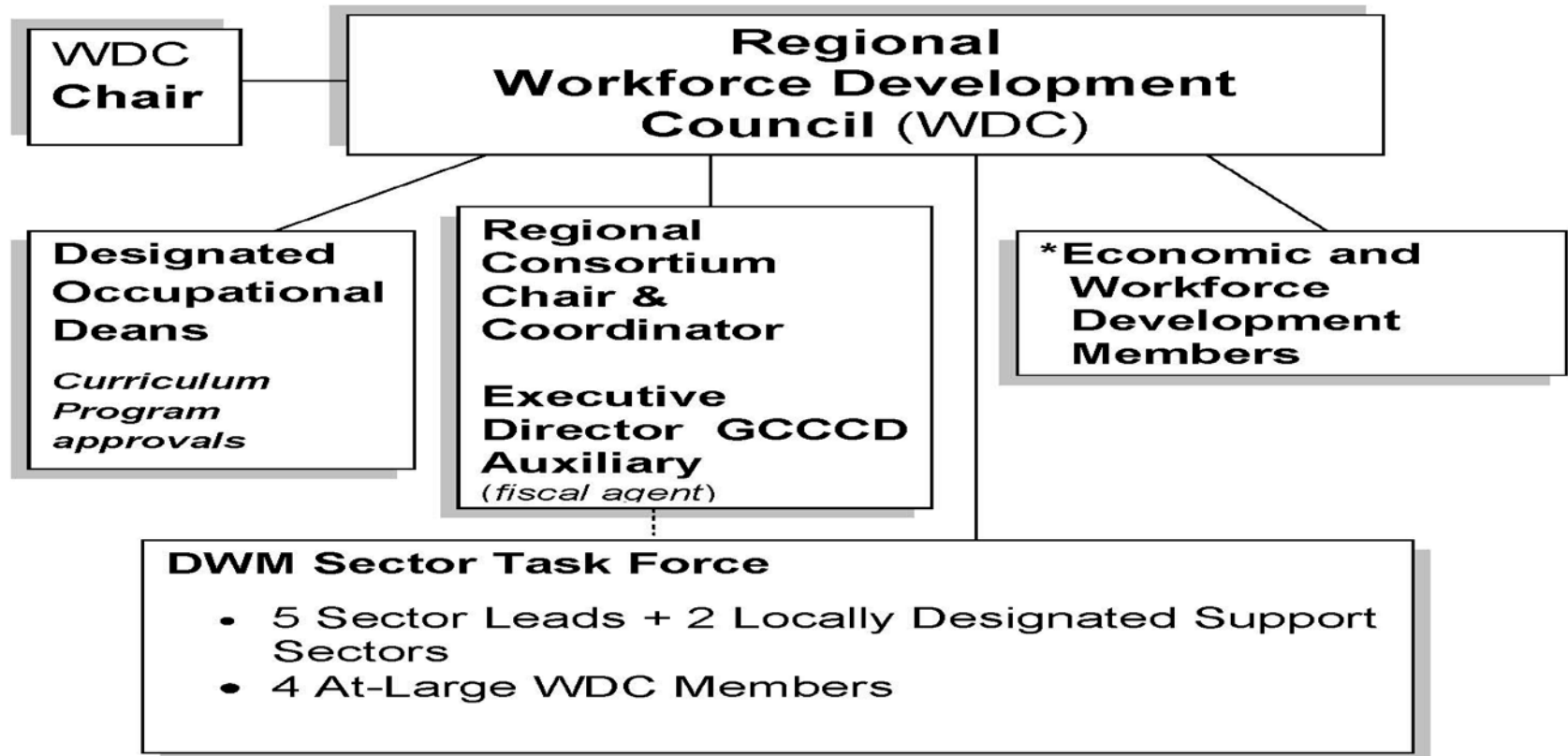
Imperial Valley

San Diego

Regional Leadership Structure for Workforce and Economic Development



WDC: Operations unit for the Consortium



**Includes but is not limited to:*

Deans, Directors, Statewide Sector Navigators, Deputy Sector Navigators, Career Pathways Director, and Technical Assistance Providers



San Diego-Imperial Sectors

Priority:

- Health (*DSN Grossmont*)
- Biotech/Life Sciences (*DSN Miramar*)
- Advanced Transportation/Renewables (*DSN Miramar*)

Emergent:

- Advanced Manufacturing (*DSN City*)
- ICT/Digital Media (*DSN City*)

Locally Designated:

- Small Business (*DSN MiraCosta*)
- International Trade/Logistics (*DSN Southwestern*)



Regional Consortium Goals 2013-14

- **Establish & implement regional structure & processes**
- **Redesign & enhance website**
- **Refine sector selection process**
- **Establish, implement & support regional sector advisory committees**
- **Support use of data/data collection to improve student success rates at the regional level**

Ten statewide Sector Navigators

Within our Region:

- **7 Deputy Sector Navigators**
- **Regional Consortium Chair & Coordinator**
- **Center of Excellence/LMI specialist**
- **Career Pathways Regional Director**
- **WDC – Operations unit for the region**



DWM Communication and Coordination

Leadership Team

- **Composition**
- **Monthly meetings**
- **Decision-making processes**
 - Sector selection process
 - Regional response to competitive funding process
 - Voting process
 - College engagement/curriculum alignment process
 - Regional advisory committee process



Lessons Learned

- **Strengthen communication**
- **Empower existing groups -- not create new ones**
- **Shed college hat**
- **Establish trust & relationships**
- **Appreciate benefits of working regionally**
- **Gain support & understanding of mission**

Leadership Team

- Sunita Cooke, SDICCCA lead,
sunita.cooke@gcccd.edu
- Mary Benard, Regional CIO lead,
mbenard@miracosta.edu
- Margie Fritch, Regional Workforce
Development Dean lead,
mfritch@sdccd.edu
- Mary Wylie, Regional Consortium
Chair, marywylie2011@aol.com

Regional Consortium



Questions?
THANK YOU!