



Centers of Excellence

The Centers of Excellence deliver statewide, regional, and local labor market research customized for community college decision making and workforce development.

As a technical assistance provider, the COE work with colleges, regions and sector networks to ...

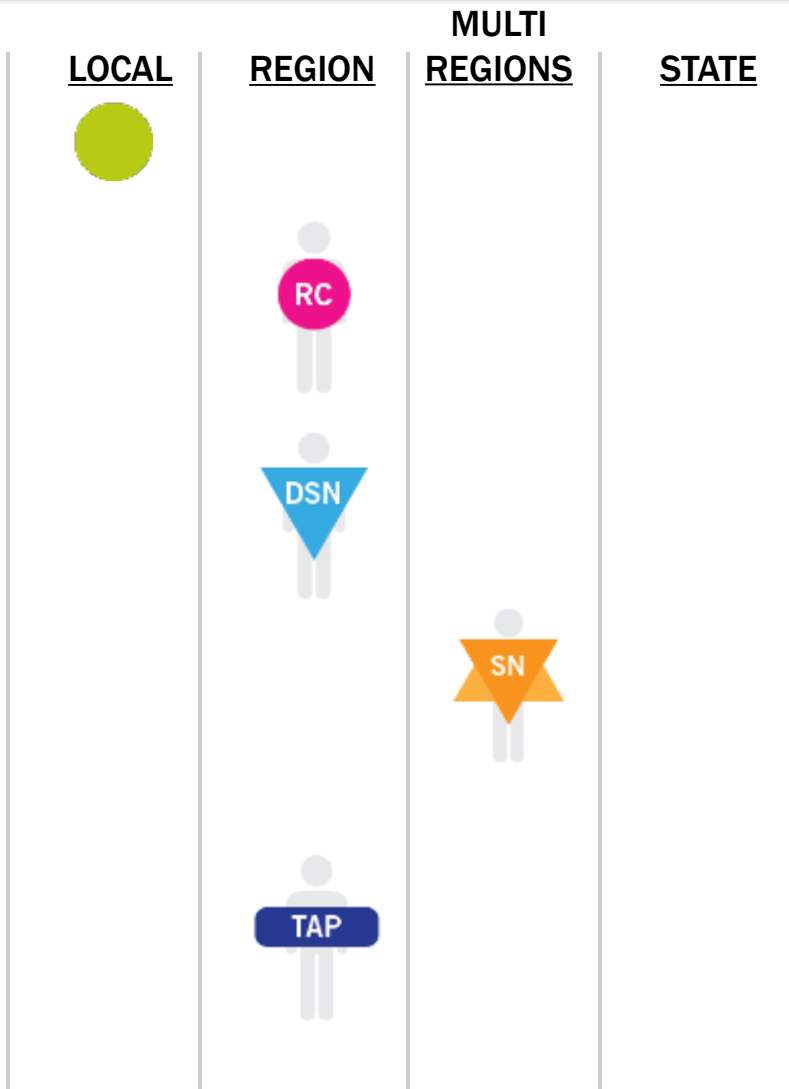
- identify opportunities and trends in high growth, emerging, and economically critical industries and occupations.
- estimate the gap between labor market demand, available training, and existing or future workers.
- help regions respond to workforce needs by providing them quality information for decision-making.





Where Our Work Aligns with Yours

- 1) Regional Sector Analysis:**
Identify regional and sector-specific labor market demand signals, gather training program data & “map the gap.”
- 2) Launchboard:**
Advise/assist with LaunchBoard as it expands to include labor market information.
- 3) Program Review/Approval:**
Advise/assist with Program Review and Program Approval requirements for LMI.
- 4) Grant Development:**
Assist with grant applications to show demand for training program and/or provide analysis as program is implemented.





Example Research Questions

- Is there an adequate supply of trained workers to meet labor market demand now and in the near future?
- How job-ready is the community college-prepared workforce from an industry perspective?
- Should regional college(s) add courses or new programs? Should the region reduce, modify or retire programs?
- Where are existing regional programs in comparison to where sector employers are located?



Research Tools

1. Traditional LMI (EDD, EMSI, Census)
2. Real Time LMI ([Burning Glass](#), [HWOL](#))
3. [InfoGroup](#) Business Listings
4. Employer Surveys/Input
5. Geo-mapping





Regional COE

Region	Director	Email
San Diego-Imperial	Zhenya Lindstrom	zhenya.lindstrom@chaffey.edu
Inland Empire/Desert	Lori Sanchez	lori.sanchez@chaffey.edu
Los Angeles-Orange	Audrey Reille	areille@mtsac.edu
South Central	Laura Coleman	colemal@losrios.edu
Central	Michelle Marquez	marquezm@mjc.edu
Bay Area	John Carrese	jcarrese@ccsf.edu
North-Far North	Theresa Milan	milant@losrios.edu



Online Presence

C-O-E
CENTERS OF EXCELLENCE
Inform Connect Advance

About Us | Our Services | Our Products | Resources | Contact Us

Search Our Website

What's New

Solar Industry
In the Greater Sacramento region, solar industry employers expect to add more than 200 jobs over the next 12 months and about 950 jobs over the next three years. [More+](#)

Agriculture Value Chain
Based on research of California employers, the estimated combined growth of occupations in the agriculture value chain over the next five years could exceed 180,000 jobs. [Read the Research Brief](#) or the [Scan](#)

Mobile Media
Mobile access exceeded desktop for the first time in a Technology platform software app for mobile devices on other platforms.

inform connect advance

www.coeccc.net

www.path2careers.net



Sign Up for eNews
Visit Centers of Excellence Site

Career Counseling Tools | Program Development Tools | Students | Contact Us

Career Counseling Tools
Targeted information to guide student choices

Program Development Tools
Market validated information for course development

Students
Find your career path

Path2Careers eNews
Sign up now



Continuing the Conversation

Contact a COE near you – www.coeccc.net/contact

Join our LinkedIn Group [Centers of Excellence](#)

Visit us online at www.coeccc.net or www.path2careers.net

Thank You!

